



GENERATOR SOURCE

SALES · RENTALS · SERVICE

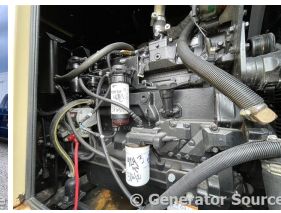
Generac - 135 kW - UNAVAILABLE

Generator Set Specs

Unit#: 088990
Capacity: 135 kW
Manufacturer: Generac
Enclosure Type: Sound Attenuated Enclosure
Voltage: 277/480 V
Amps: 202 AMPS
Hertz: 60 Hz
Circuit Breaker Amps: 250
Phase: Three-Phase
Location: Brighton, CO
of Leads: 4
Model #: 10010100100
Serial #: 2099246
Generator Weight LBS: 10000
Generator Dimensions: 166" L x 40" x W 101" H

Engine Specs

Make: JOHN DEERE
Year: 2008
Hours: 462
Fuel Tank Capacity (Gallons): approx 500
Fuel Tank Type: Double Wall Base
Model #: 6068HF285
Serial #: PE6068L059045



GENERATOR SET DATA		MADE IN USA	
MODEL	10010100100	SERIAL	2099246
TYPE CODE	800135K366.8D18HPSVGC	ENGINE NO.	DG0516
RATED KW	135	RATED KVA	169
VOLTS	277/480	AMPS	202.9 / 0 / 0
PHASE	3	POWER FACTOR	.8
HERTZ	60	HERTZ	60
BRKR KW	185.3	BRKR AMPS	250 AMP X ¹⁴
ALT. RPM	1800	ENG. RPM	1800
GENERAC POWER SYSTEMS, INC.		PROD. DATE	08/18/08
CLASS [H] ROTOR [H] STATOR WINDING INSULATION AT 107.5 AMPS		WALKERSHA, WI	

Price: Call us at 800-853-2073 for a quote

Generator Source thoroughly tests all of our products!

The pricing displayed on our website is subject to change based on deinstallation costs, installation requirements, rigging/disposal, and any other situational variables, but we do try to keep it as up to date as possible.

Copyright © Generator Source. All Rights Reserved. Caterpillar, Detroit, Cummins, Perkins, SDMO, and all other brand names are trademarks of their individual prospective companies.

sales@generatorsource.com - generatorsource.com
303-659-2073 - 1-800-853-2073

FORMERLY
Diesel
SERVICE & SUPPLY