



GENERATOR SOURCE

SALES · RENTALS · SERVICE

Generac - 400 kW - UNAVAILABLE

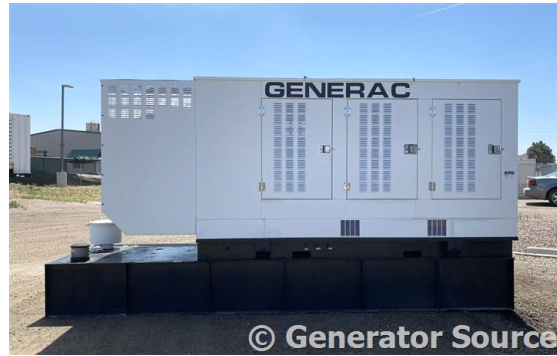
Generator Set Specs

Unit#: 089425
Capacity: 400 kW
Manufacturer: Generac
Enclosure Type: Weatherproof Enclosure
Voltage: 277/480 V
Amps: 601.4 AMPS
Hertz: 60 Hz
Circuit Breaker Amps: 700
Phase: Three-Phase
Location: Brighton, CO
of Leads: 6
Model #: 8525850200
Serial #: 2094483
Generator Weight LBS: 15000

Engine Specs

Make: Mitsubishi
Year: 2007
Hours: 530
Fuel Tank Capacity (Gallons): approx 600
Fuel Tank Type: Double Wall Base
Model #: 8DC9
Serial #: 8DC9-455809

Price: Call us at 800-853-2073 for a quote



GENERATOR SET DATA		MADE IN USA	
MODEL	8525850200	SERIAL	2094483
TYPE		ENGINE NO.	DABR29
CODE	M00400-K36150018GPPY	ALT KW	NONE
RATED KW	400	RATED KVA	500
VOLTS	277/480	UPS/IZE	NONE
PHASE	3	AMPS	601.4 / 0 / 0
BRKR	455.5	HERTZ	60
ALT R.P.M.	1800	ENG R.P.M.	1800
		PROD DATE	08/19/07
GENERAC POWER SYSTEMS, INC. WALKESHA, WI			
CLASS <input type="checkbox"/> ROTOR <input checked="" type="checkbox"/> STATOR WINDING REGULATION AT 40°C AMB/50°C			

Generator Source thoroughly tests all of our products!

The pricing displayed on our website is subject to change based on deinstallation costs, installation requirements, rigging/disposal, and any other situational variables, but we do try to keep it as up to date as possible.

Copyright © Generator Source. All Rights Reserved. Caterpillar, Detroit, Cummins, Perkins, SDMO, and all other brand names are trademarks of their individual prospective companies.

sales@generatorsource.com - generatorsource.com
303-659-2073 - 1-800-853-2073

