



GENERATOR SOURCE

SALES · RENTALS · SERVICE

Taylor Power Systems - 500 kW - UNAVAILABLE

Generator Set Specs

Unit#: 090074

Capacity: 500 kW

Manufacturer: Taylor Power Systems

Enclosure Type: Sound Attenuated Enclosure

Voltage: 277/480 V

Amps: 753 AMPS

Hertz: 60 Hz

Circuit Breaker Amps: 800

Phase: Three-Phase

Location: Jacksonville, FL

of Leads: 12

Model #: DS500MS

Serial #: M06F112047-02

Generator Weight LBS: 25000

Generator Dimensions:

288"x104"x312"

Engine Specs

Make: Volvo

Year: 2006

Hours: 500

Fuel Tank Capacity (Gallons): 4000

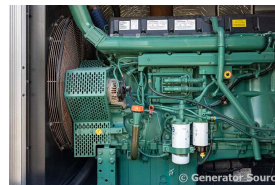
Fuel Tank Type: Double Wall Base

Model #:

TAD1641GE

Serial #:

D16*005692*C2*A



Price: Call us at 800-853-2073 for a quote

Generator Source thoroughly tests all of our products!

The pricing displayed on our website is subject to change based on deinstallation costs, installation requirements, rigging/disposal, and any other situational variables, but we do try to keep it as up to date as possible.

Copyright © Generator Source. All Rights Reserved. Caterpillar, Detroit, Cummins, Perkins, SDMO, and all other brand names are trademarks of their individual prospective companies.

sales@generatorsource.com - generatorsource.com
303-659-2073 - 1-800-853-2073

FORMERLY
Diesel
SERVICE & SUPPLY